



## LUTZE Cablefix® Cable Entry Systems

# LUTZE Cablefix® Cable Entry Systems



## Cablefix® X



## Cablefix® One



### Simple Configuration

Order one part number and receive a ready-to-install kit which includes the frame, mounting hardware, and all seals needed to cover the full clamping range of the system. Pre-configured kits reduce the need for cumbersome seal configuration, make ordering easy, and reduce the number of part numbers on drawings, BOMs, and in inventory.



### UL Type 4X, 12, and 13

Cablefix® X and One are rated for Types 4X, 12, and 13, protecting your cabinet, components, and cables in indoor and outdoor applications. Types 4X and 12 seal against dust and liquids, while Type 13 adds additional protection against oil and coolant spray.



### Reduce your cable entry footprint

Cablefix® cable entry systems provide high cable density and reduce the cabinet space required for cable entry by over 50%. This means more space for other components and in some cases may allow a smaller control enclosure to be used, saving space and reducing cost.

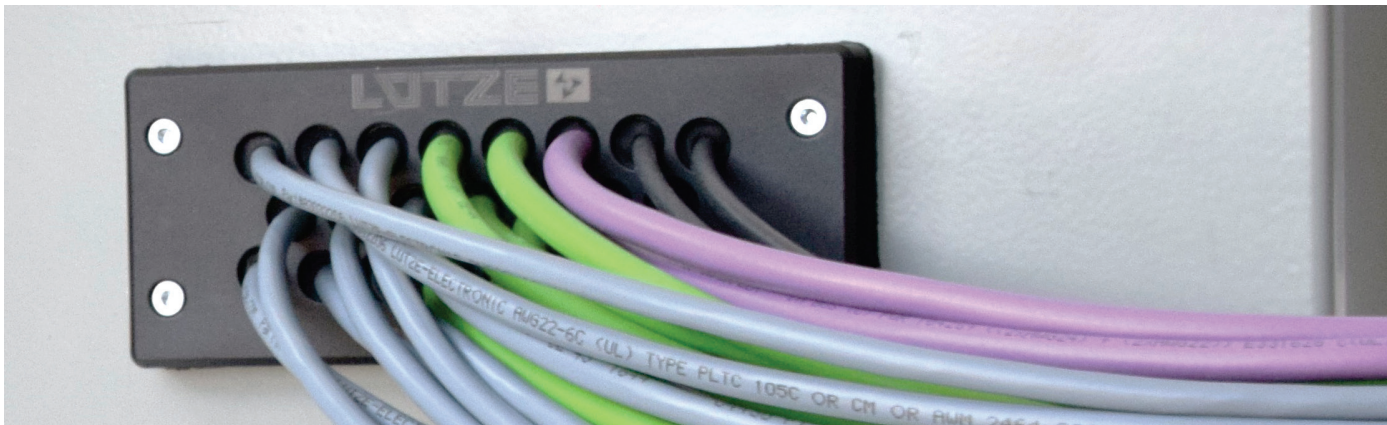


### Save valuable time

Cablefix® systems can reduce installation time by as much as 80% when compared to installing individual cable glands. Cablefix® X and Cablefix® One are mounted using standard mounting cutouts which can be made using standard rectangular punches, making the entire process from cabinet preparation to final installation quick and easy.

# LUTZE Cablefix® X Cable Entry System

**Xtreme protection. Xtreme savings. Xtremely easy.**

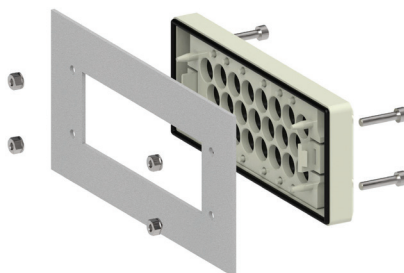


## Characteristics

- Cables install easily by pushing the end through the seal from the front
- Integrated seal protects up to UL Type 4X, 12, 13 and IP65
- Saves up to 50% installation space and 80% installation time vs. using individual cable glands
- Easy to install: can be mounted with provided bolts or snapped directly into enclosures with a 1.5mm wall thickness
- Entry points are sealed by default, eliminating the need for blanking plugs
- Standard 112 x 36 mm cutout makes cabinet preparation easy; punches are available from third parties

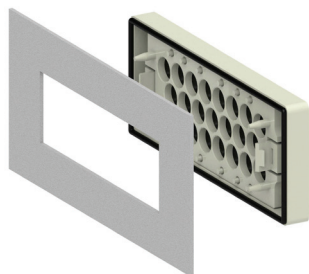


## Bolt-mounted Design (for all enclosures)



| Part No. | Description    | Number of Entry Points | Clamping Range Ø mm | Ingress Protection        |
|----------|----------------|------------------------|---------------------|---------------------------|
| 606550   | Cablefix® X 12 | 12                     | 12 x 5.0-13.0       | UL Type 4X, 12, 13, IP 65 |
| 606551   | Cablefix® X 23 | 23                     | 23 x 4.0-8.5        | UL Type 4X, 12, 13, IP 65 |

## Snap-in Design (for enclosures with 1.5mm wall thickness)



| Part No. | Description    | Number of Entry Points | Clamping Range Ø mm | Ingress Protection        |
|----------|----------------|------------------------|---------------------|---------------------------|
| 606561   | Cablefix® X 12 | 12                     | 12 x 5.0-13.0       | UL Type 4X, 12, 13, IP 65 |
| 606562   | Cablefix® X 23 | 23                     | 23 x 4.0-8.5        | UL Type 4X, 12, 13, IP 65 |

\*UL Type 4X applies to cables having a diameter  $\geq 5.0$ mm

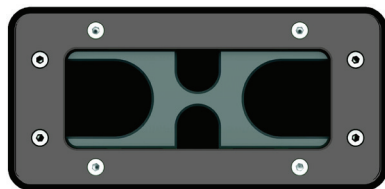
# LUTZE Cablefix® One Cable Entry Kits

One kit. One part number. Easy ordering.



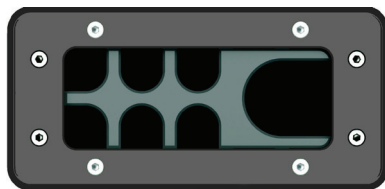
## Characteristics

- Suitable for cables with or without pre-installed connectors
- Kits include frame, hardware and the layered seals needed to cover the entire clamping range specified for each entry point
- Kits simplify the specifying and ordering process
- Unused seals are closed by default, eliminating the need for blanking plugs
- Protects up to UL Type 4X, 12, 13 and IP65
- Strong strain relief per EN 62444
- Standard 112 x 46 mm cutout makes cabinet preparation easy; punches are available from third parties



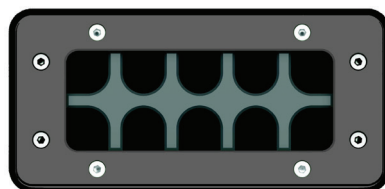
4 Cable Configuration

| Part No. | Description               | Number of Entry Points | Clamping Range Ø mm           | Ingress Protection           |
|----------|---------------------------|------------------------|-------------------------------|------------------------------|
| 606500   | Cablefix® One 4 Entry Kit | 2 Small<br>2 Large     | 2 x 3.5-15.5<br>2 x 15.5-29.5 | UL Type 4X,<br>12, 13, IP 65 |



7 Cable Configuration

| Part No. | Description               | Number of Entry Points | Clamping Range Ø mm           | Ingress Protection           |
|----------|---------------------------|------------------------|-------------------------------|------------------------------|
| 606501   | Cablefix® One 7 Entry Kit | 6 Small<br>1 Large     | 6 x 3.5-15.5<br>1 x 15.5-29.5 | UL Type 4X,<br>12, 13, IP 65 |



10 Cable Configuration

| Part No. | Description                | Number of Entry Points | Clamping Range Ø mm | Ingress Protection           |
|----------|----------------------------|------------------------|---------------------|------------------------------|
| 606502   | Cablefix® One 10 Entry Kit | 10 Small               | 10 x 3.5-15.5       | UL Type 4X,<br>12, 13, IP 65 |

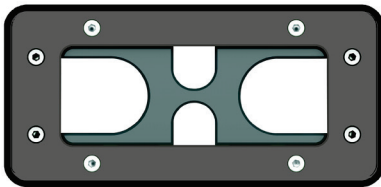
# Cablefix® One Components

## Design a custom Cablefix® One frame for your application

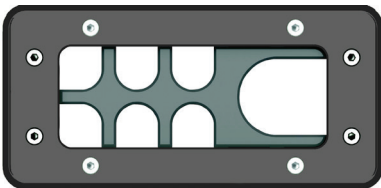
LUTZE Cablefix® One frames can be configured with the specific frame and seals required for your application and ordered as individual components.

1. Select the frame configuration needed for your application, based on the number of entry points and size of the cables required by the application. Individual frames will ship with all components and mounting hardware, but do not include seals.
2. Choose one seal for each cable entry point using the clamping ranges below. One seal must be ordered for each entry point, regardless of whether it will be occupied by a cable or not. Unused seals are closed by default, eliminating the need for blanking plugs.
3. Install frame, seals, and cables as per the included instructions.

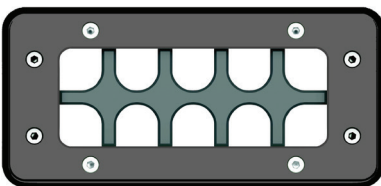
### Frames (no seals included)



| Part No. | Description               | Clamping Range<br>Ø mm      | Ingress Protection*       | Strain Relief* |
|----------|---------------------------|-----------------------------|---------------------------|----------------|
| 606507   | Frame for Cablefix® One 4 | Dependent on seal selection | UL Type 4X, 12, 13, IP 65 | Per EN 62444   |



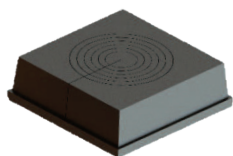
| Part No. | Description               | Clamping Range<br>Ø mm      | Ingress Protection*       | Strain Relief* |
|----------|---------------------------|-----------------------------|---------------------------|----------------|
| 606508   | Frame for Cablefix® One 7 | Dependent on seal selection | UL Type 4X, 12, 13, IP 65 | Per EN 62444   |



| Part No. | Description                | Clamping Range<br>Ø mm      | Ingress Protection*       | Strain Relief* |
|----------|----------------------------|-----------------------------|---------------------------|----------------|
| 606509   | Frame for Cablefix® One 10 | Dependent on seal selection | UL Type 4X, 12, 13, IP 65 | Per EN 62444   |

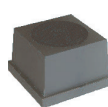
### Individual Seals

Seals for large entry points



| Part No. | Seal Type | Clamping Range<br>Ø mm |
|----------|-----------|------------------------|
| 606505   | L1        | 15.5-21.5              |
| 606506   | L2        | 21.5-29.5              |

Seals for small entry points



| Part No. | Seal Type | Clamping Range<br>Ø mm |
|----------|-----------|------------------------|
| 606503   | S1        | 3.5-9.5                |
| 606504   | S2        | 9.5-15.5               |

\*Ingress protection and strain relief ratings apply to properly installed complete system, including Cablefix® One frame and all matching seals.

LUTZE Inc.  
13330 South Ridge Drive  
Charlotte, NC 28273  
Tel.: (704) 504-0222  
Fax: (704) 504-0223  
info@lutze.com

# Efficiency in Automation

Cable • Connectivity • Cabinet • Control

[www.lutze.com](http://www.lutze.com)  
[www.driveflex.com](http://www.driveflex.com)



1-800-447-2371

M140219